

**LEAD**  
Marine  
Contractors  
Limited

Mind over Water



## Workboat ADEL Vessel Specification



**LEAD**  
Marine  
Contractors  
Limited

Mind over Water

## Workboat ADEL - Vessel Specification

### **WORKBOAT - MAIN DIMENSIONS**

Registration Number	142210496
MMSI Number	312302000
Registry & Classification	Belize/Panama
Length Overall	18m
Beam Overall	7.5m
Maximum Draught	1.2m/1.8m
Gross Tonnage	65 Mtons
Nett Tonnage	19 Mtons
Displacement	38 Tonnes
Vessel Type	Catamaran
Hull Type	Fine entry semi displacement
Passengers	12 max
Crew	4 max

### **PERFORMANCE**

Speed	24 knots (maximum)
Speed	19 knots (economic/fully loaded)
Fuel Economy/Consumption	110 litres per engine per hour @ 80%
Fuel Tank (including cargo)	16,500 litres
Water Tank	800 litres
Refuelling Rig	40 metres vertical @a rate of 40 litres per minute

### **LOAD AREA**

Length	3.5 metres
Width	6.3 metres
Load Area	22.05 m <sup>2</sup>
Load Capacity	10 Tonnes
Deck Strength	1 Tonne per m <sup>2</sup>

### **MACHINERY**

Main Engines	Iveco C13 825
Total Power	2 x 750 BHP/1500 BHP
Generator	3.5kva Kohler
Propulsion	Fixed Pitch Propellers



**LEAD**  
**Marine**  
**Contractors**  
**Limited**

Mind over Water

## Workboat ADEL - Vessel Specification

### ACCOMMODATION

Main Cabin	12 suspension seats
Overnight	3 berths
Galley	Electric cooker, Microwave, Fridge Hot/cold water, Hot beverage making facilities
Showers	1
Toilet	1
Onboard power	240 VAC 5KVA pure size wave inverter 8.5 KVA when sync'd with generator

### OTHER SPECIFICATIONS

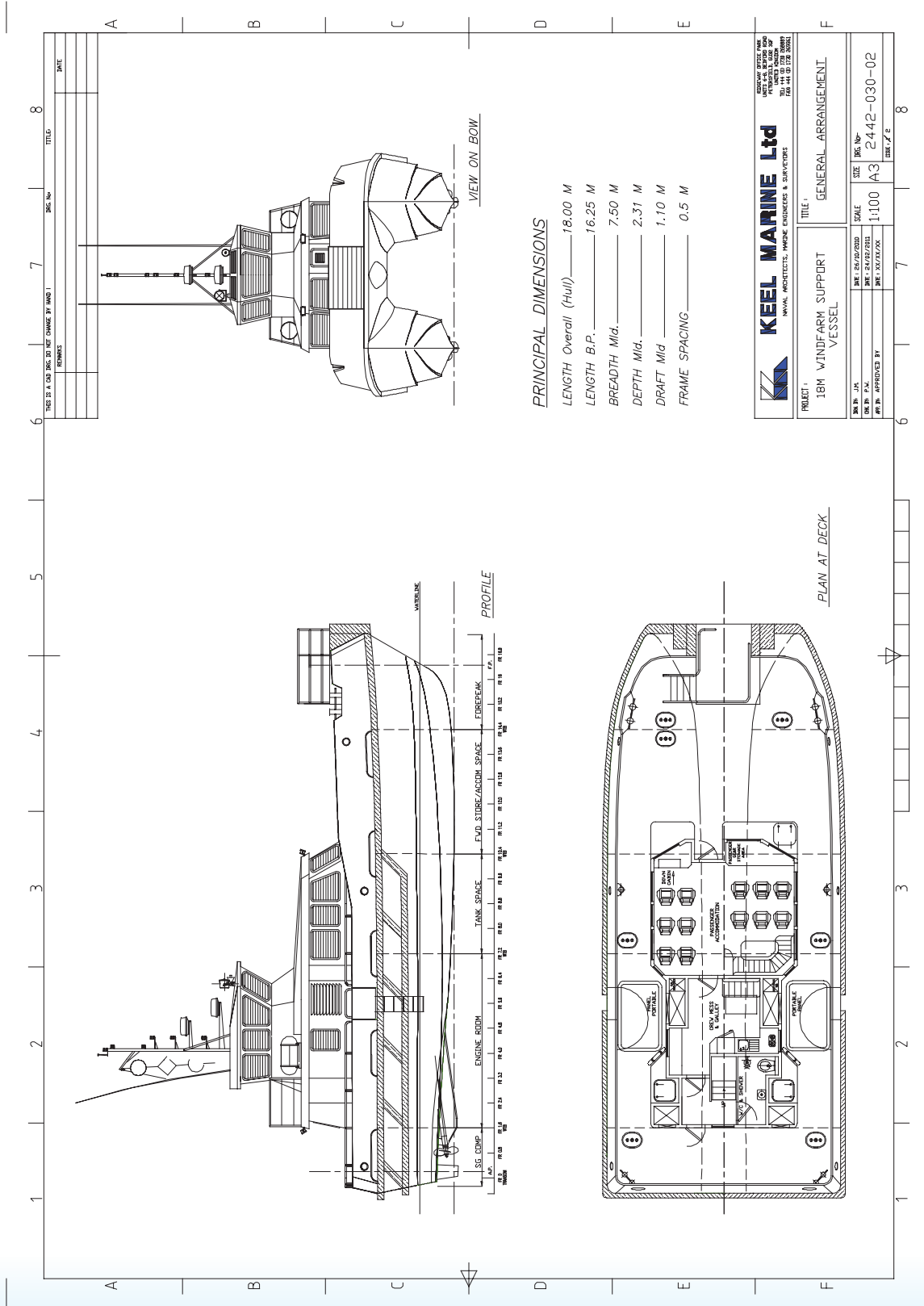
Primary Radar	Simrad NSO 15" glass bridge system with 6kw 4ft open array
Secondary Radar	Simrad NSO 15" glass bridge system with BR24 4G broadband scanner
Echosounder	Simrad BSM1 with dual frequency transducer displayed on 15" glass bridge system
Autopilot	Simrad AP70 with HS70 satellite compass
Chartplotter	Simrad NSO displayed on 15" glass bridge system
Primary Radio	Icom M603 DSC fixed VHF radio
Secondary Radio	Icom M603 DSC fixed VHF radio
Tracking System	Comar CSA300 Class A AIS transceiver
MOB System	Sea Marshall
Fender	Ocean 3 3rd Gen tendering system
Satellite Phone	Inmarsat



**LEAD**  
Marine  
Contractors  
Limited

Mind over Water

# Workboat ADEL - Vessel Specification



LP6, First Avenue, Granwood, Chaguaramas, Trinidad & Tobago, W.I.

Tel: 868-634-4229 Fax: 868-634-4145 Office Email: info@leadmarine.org

Commercial Email: mjkluft@leadmarine.org Operations Email: jdkeane@leadmarine.org Website: www.leadmarine.org